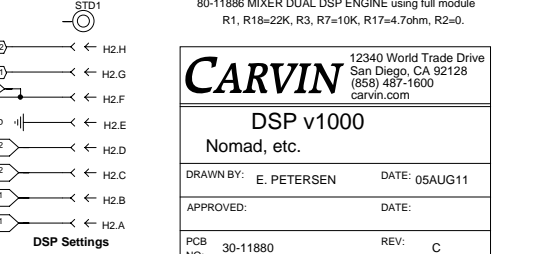
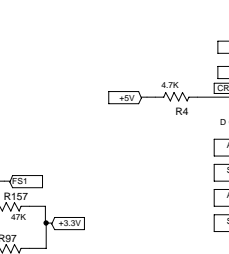
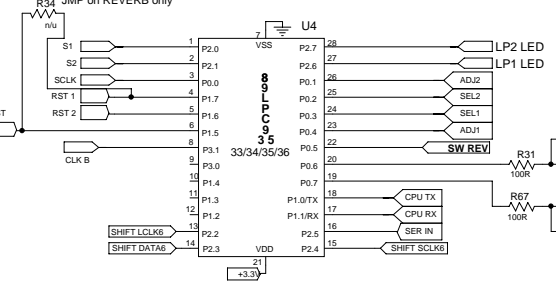
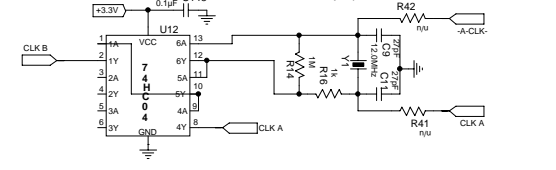


REVERB UNIT:
U12 = NOT USED
R41, R42 = jumpers



- 80-11880 V3 AND VL300 REVERB WITH MIDI AND CHANNEL CNTRL
- 80-11881 REVERB V3M
- 80-11882 REVERB VT50, NOMAD, BELAIR
- 80-11883 REVERB VINTAGE 16, VT16
- 80-11884 REVERB X100B
- 80-11885 MIXER SINGLE DSP ENGINE XP800L using U1
R1=22K, R3=10K R17=4.7ohm, R2=0.
- 80-11886 MIXER DUAL DSP ENGINE using full module
R1, R18=22K, R3, R7=10K, R17=4.7ohm, R2=0.

CARVIN 12340 World Trade Drive
San Diego, CA 92128
(858) 467-1600
carvin.com

DSP v1000
Nomad, etc.

DRAWN BY: E. PETERSEN DATE: 05AUG11

APPROVED: DATE:

PCB NO: 30-11880 REV: C

ASSY. NO: see table REV: A

REVISED BY: E.PETERSEN DATE: 12SEP11

